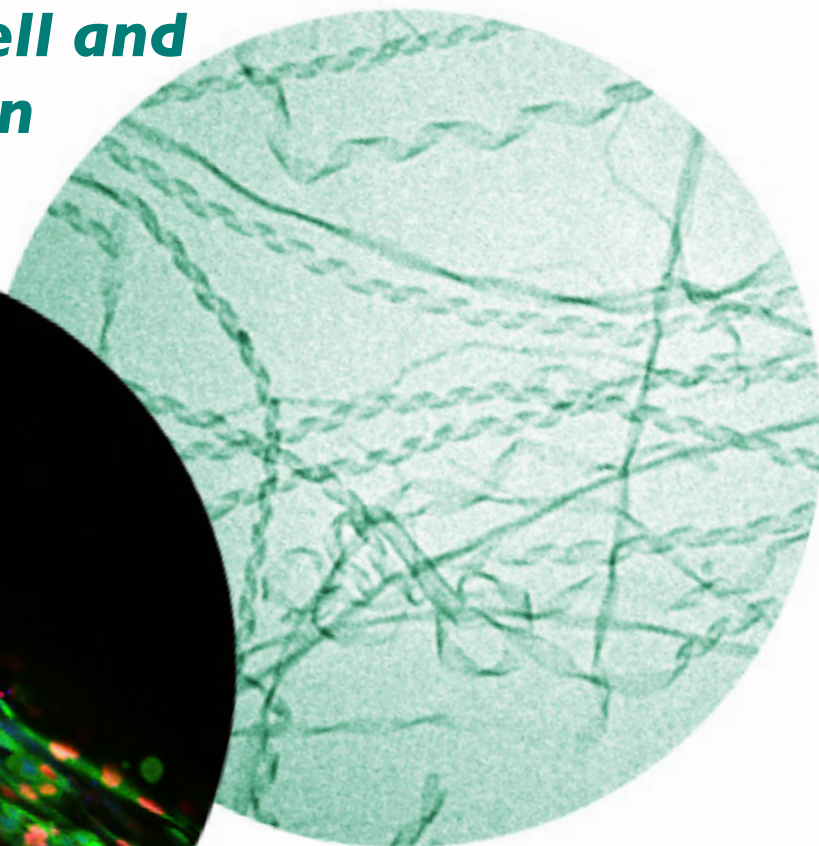
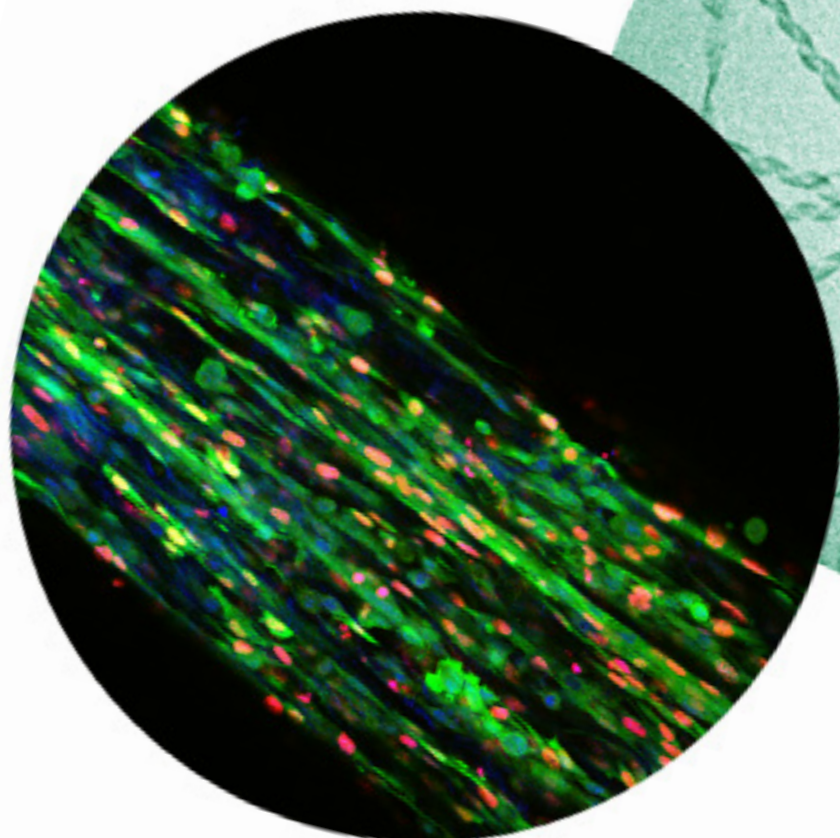


# Rising Stars of SQL

Sponsored by the Peptide Synthesis Core & ANTEC

**Eduard Sleep, PhD**

***Peptide Amphiphiles as Extracellular Matrix Mimics for Cell and Protein Encapsulation and Delivery***



**Charles Rubert Perez, PhD**

***Mimicking the Bioactivity of Growth Factors Using Supramolecular Structures***

**Tuesday, July 26, 2016**

2:00pm Sleep Lecture

3:00pm Poster Session & Refreshments

3:30pm Rubert Perez Lecture

**Baldwin Auditorium**

Lurie Medical Research Center | 303 East Superior, 1st Floor | Chicago Campus